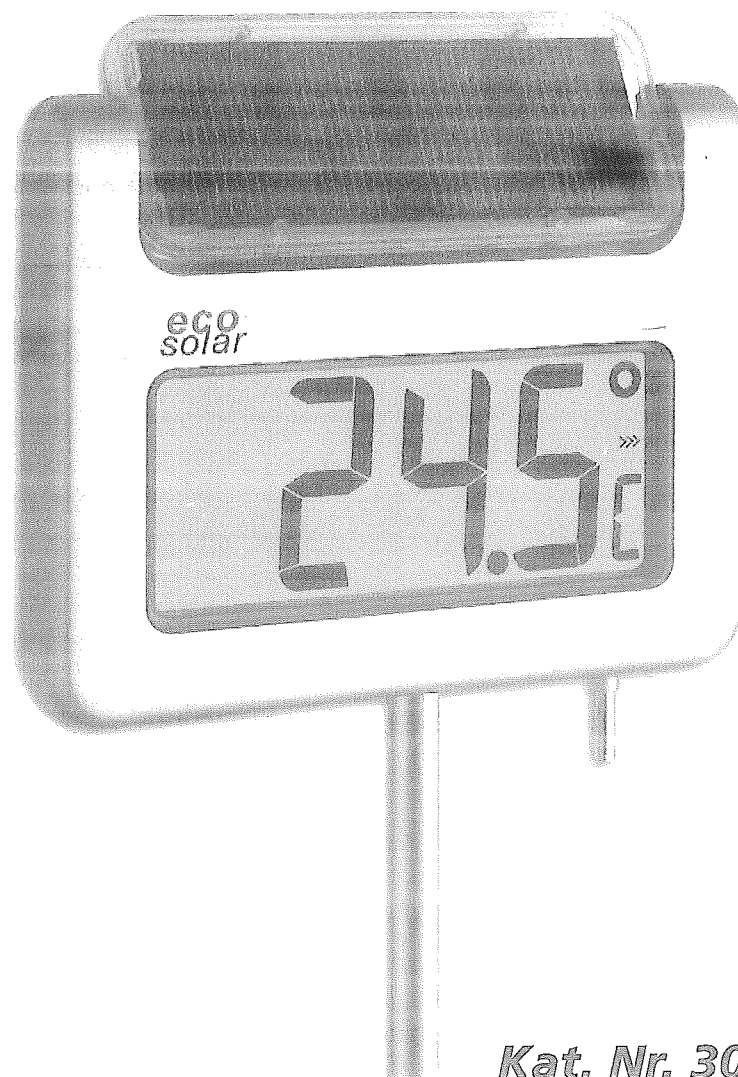
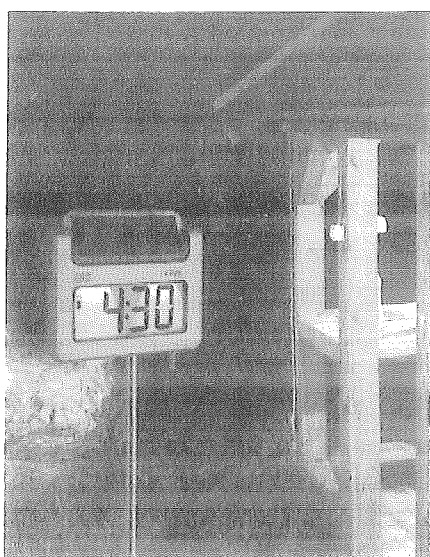


*Bedienungsanleitung  
Operating Instructions  
Mode d'emploi  
Istruzioni  
Instrucciones para el manejo  
Gebruiksaanwijzing*



*Kat. Nr. 30.2026*

Fig. 1

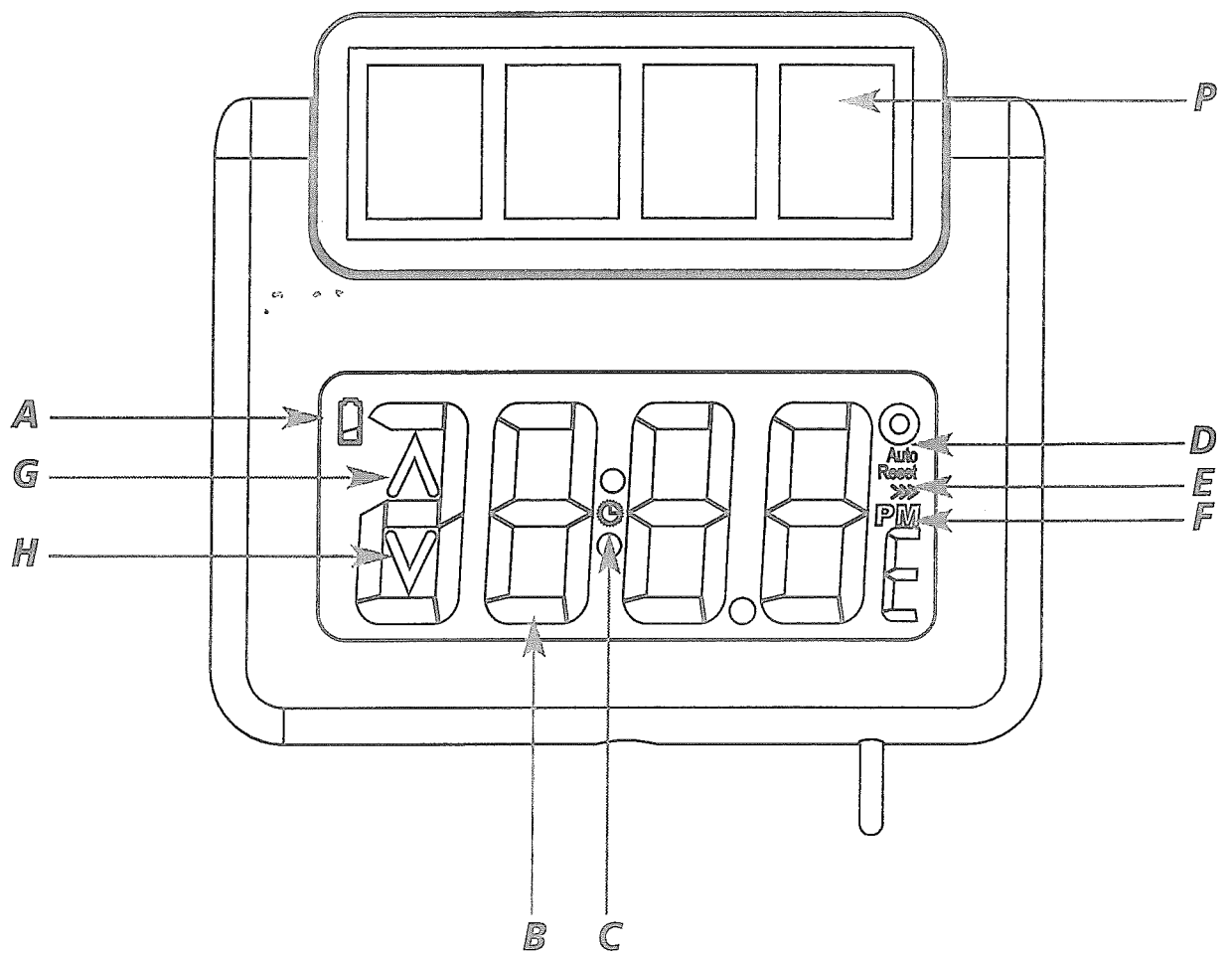
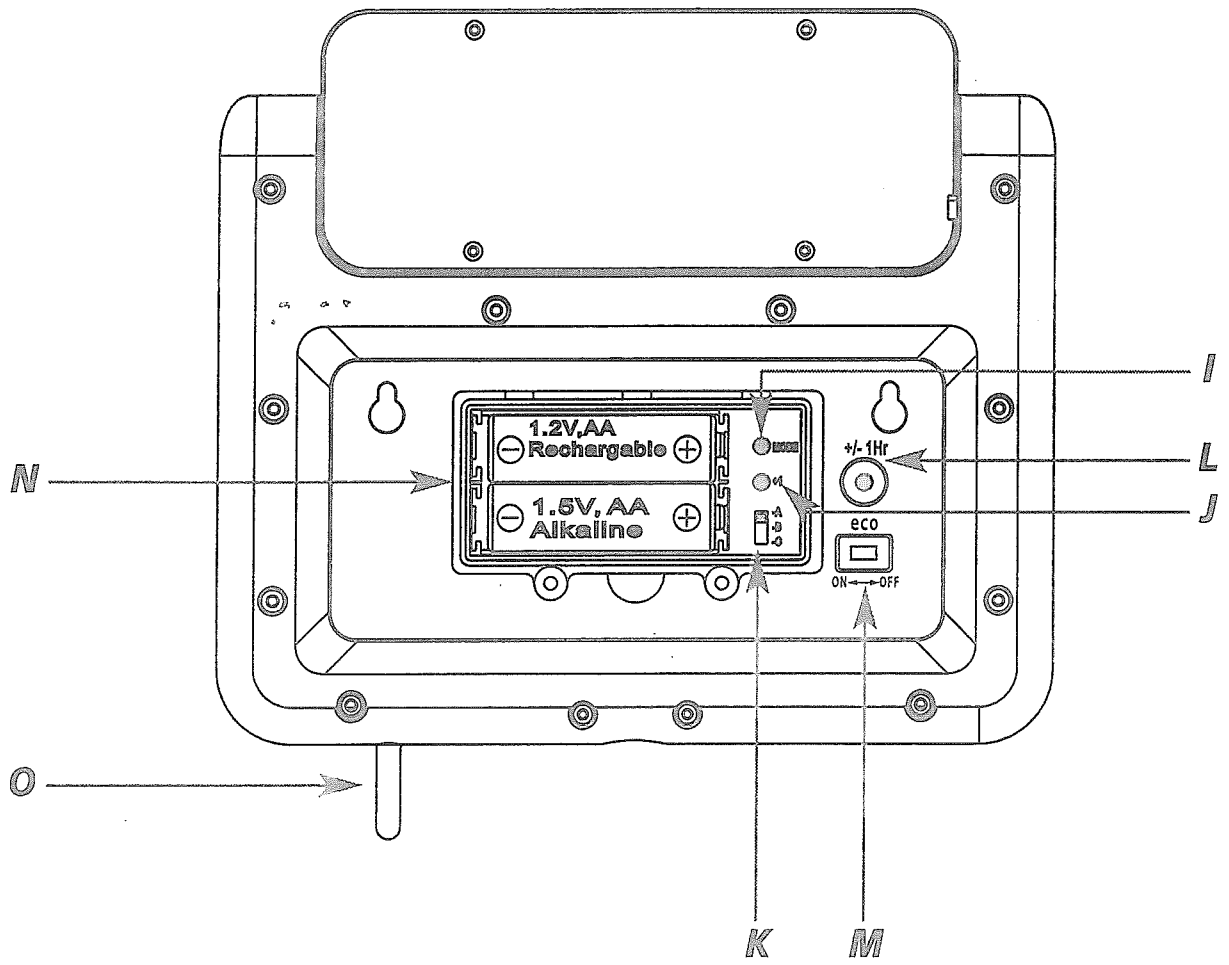


Fig. 2



*Functions*

- *Clear functional design*
- *Large digital display with 3 different modes:*
  1. *Current temperature*
  2. *Current temperature and clock in sequence*
  3. *Current, highest and lowest temperature and time in sequence*
- *Maximum and minimum values with auto reset*
- *Automatic backlight at dark*
- *Rod (separable) in aluminium*
- *For putting in the ground*
- *Solar panel - 180° rotatable*
- *Weather resistant*

*Display (Fig. 1)*

- A: Battery symbol*
- B: Indication time/temperature*
- C: Symbol Daylight Saving Time (DST)*
- D: Automatic reset (Auto Reset)*
- E: Display mode A, B or C*
- F: PM at 12-hours system*
- G: Symbol maximum temperature*
- H: Symbol minimum temperature*

*Buttons (Fig. 2)*

- I: MODE button*
- J: +1 button*
- K: Switch A-B-C*
- L: +/- 1Hr button*
- M: ECO slide*

*Housing (Fig. 1+2)*

- N: Battery compartment*
- O: Temperature probe*
- P: Solar panel*

### *Getting started*

- *Open the battery compartment by a screw driver.*
- *Insert the batteries (above: rechargeable battery 1 x 1,2 V AA for the illumination; down: battery 1 x 1,5 V AA for all functions) into the battery compartment, observing the correct polarity.*
- *ATTENTION: The 1.2 V rechargeable battery for the backlight is not fully charged when shipped. For maximum efficiency it is advisable to have the rechargeable battery fully charged by the solar panel on a sunny day before the first use. Alternatively, the rechargeable battery can be recharged with an ordinary battery charger.*
- *Pull off the protection foil on the display.*
- *The unit is now ready to use.*
- *All LCD segments will light up for about a few seconds*
- *00:00 appears on the display and the DST symbol ☀ is flashing.*
- *Do we have Daylight Saving Time, press +/-1Hr button for confirmation while the symbol is flashing and the DST symbol ☀ remains on the display.*
- *During standard time press +/-1Hr button once again and the DST symbol ☀ disappears.*
- *If there is no confirmation within 15 seconds the DST symbol ☀ stops flashing and disappears.*
- *For a simple time switch with only one keypress you have to have a correct setting (see point: Daylight Saving Time / Standard Time switch)*
- *The buttons are located inside the battery compartment.*

### *Manual setting of clock*

- *Slide the switch to position B or C.*
- *As soon as the time appears in the display press MODE button to enter the setting mode.*
- *The hour digit is flashing.*
- *Press +1 button to set the hours. Hold and press the button for a fast count.*
- *Press MODE button again and set minutes in the same way.*
- *Press MODE button again and you will return to normal mode.*
- *The instrument will quit the setting mode, if there is no button used within 15 seconds period.*

**Display change °C/°F**

- When the display shows the current temperature, press +1 button to change between °C or °F as temperature unit, at the same time the time system changes from 24 to 12 hour-system.
- PM appears on the display after noon.
- Close the battery compartment again.

**Daylight Saving Time / Standard Time switch**

- When the time appears on the display hold +/-1 Hr button outside the battery compartment for 3 seconds and summertime changes in to wintertime and vice versa (+/-1 hour).
- Please pay attention to the correct setting at the startup procedure.

**Select display mode**

- Switch position A: Current temperature (display: >)
- Switch position B: Current temperature and time alternately (display: >>)
- Switch position C: Current temperature, highest/lowest temperature and time alternately (display: >>>)

**Backlight**

- The supplied battery will be recharged in an environmentally friendly manner by the solar cells.
- Please consider when choosing a location that the solar panel needs at least 8-10 hours of light per day to guarantee a long-term sufficient power supply. The thermometer is provided with a light sensor to turn on the light automatically at dark between 5 and 9 o'clock and 18 and 23 o'clock. Avoid the closeness of artificial light (like: street lighting).
- With the ECO slide it is possible to turn the time controlled illumination on (left) or off (right)
- If the ECO mode is not active the illumination will turn on automatically as soon as the solar panel indicates darkness.

## *AVENUE – Garden thermometer with solar lighting*



- *When the battery symbol appears on the display, the voltage of the rechargeable battery is low and the back light function can be temporarily disabled, until the power supply by the solar cells is sufficient again.*

### *MAXIMIN temperatures*

- *There is an automatic update of maximum temperature at 8:00 and minimum temperature at 20:00. Please set the actual time to activate this function.*
- *Auto Reset flashes on the LCD.*

### *Temperature probe*

- *The silver pin is the temperature probe. Please take care of it and do not break it. The temperature probe has no adjusting function. It only measures the temperature.*

### *Installation*

- *Choose a shady position. Direct sunshine falsifies the measurement.*
- *Press the plate firmly in the ground.*
- *Mount the rod and put it into the ground passing through the hole in the middle of the plate. Fix the thermometer on the rod and turn the solar panel (rotatable 180°) to the direction where it receives the highest light supply.*

### *Battery replacement:*

- *Please change the 1.5 V AA battery when the display becomes weak.*
- *Use alkaline batteries only. Observe correct polarity. Low batteries should be changed soon to avoid the damage resulting from a leaking battery. Batteries contain harmful acids. Wear protective glasses and gloves when handling with leaked batteries.*

#### *Attention:*

*Please do not dispose of old electronic devices and empty batteries in household waste. To protect the environment, take them to your retail store or to appropriate collection sites according to national or local regulations.*

**Specifications**

Measuring range:	-25°C...+70 °C (-13°F...+158°F)
Accuracy:	±1°C 0°C...+45°C (+32°F...+113°F) ±1.5°C -25°C...0°C (-13°F...+32°F) und +45°C...+70°C (+113°F...+158°F)
Resolution:	0.1 °C
Batteries:	1x 1.2 V AA rechargeable battery and 1x 1.5 V AA battery

**Maintenance**

- Do not expose the instrument to extreme temperatures, vibration or shock.
- Do not touch the temperature probe. It is very delicate and damageable.
- Avoid placing the instrument near interference sources/metal frames such as computer or TV sets.
- If the thermometer does not work properly, change the battery.
- Attention: The solar panel is very damageable. Do not drop the instrument and avoid collisions or vibration.
- For a very good function keep the solar panel always clean. Clean it with a soft cloth and maybe a little glass- or display cleaner.
- Clean it with a soft damp cloth. Do not use solvents or scouring agents.

**Intended usage, exclusion of warranty, safety information**

- The product is not a toy. Keep it out of reach of children.
- The product is not to be used for medical purpose or for public information, but is determined for home use only.
- The specifications of this product may change without prior notice.
- No part of this manual may be reproduced without written consent of
- Improper use or unauthorized opening of housing will mean the loss of warranty.